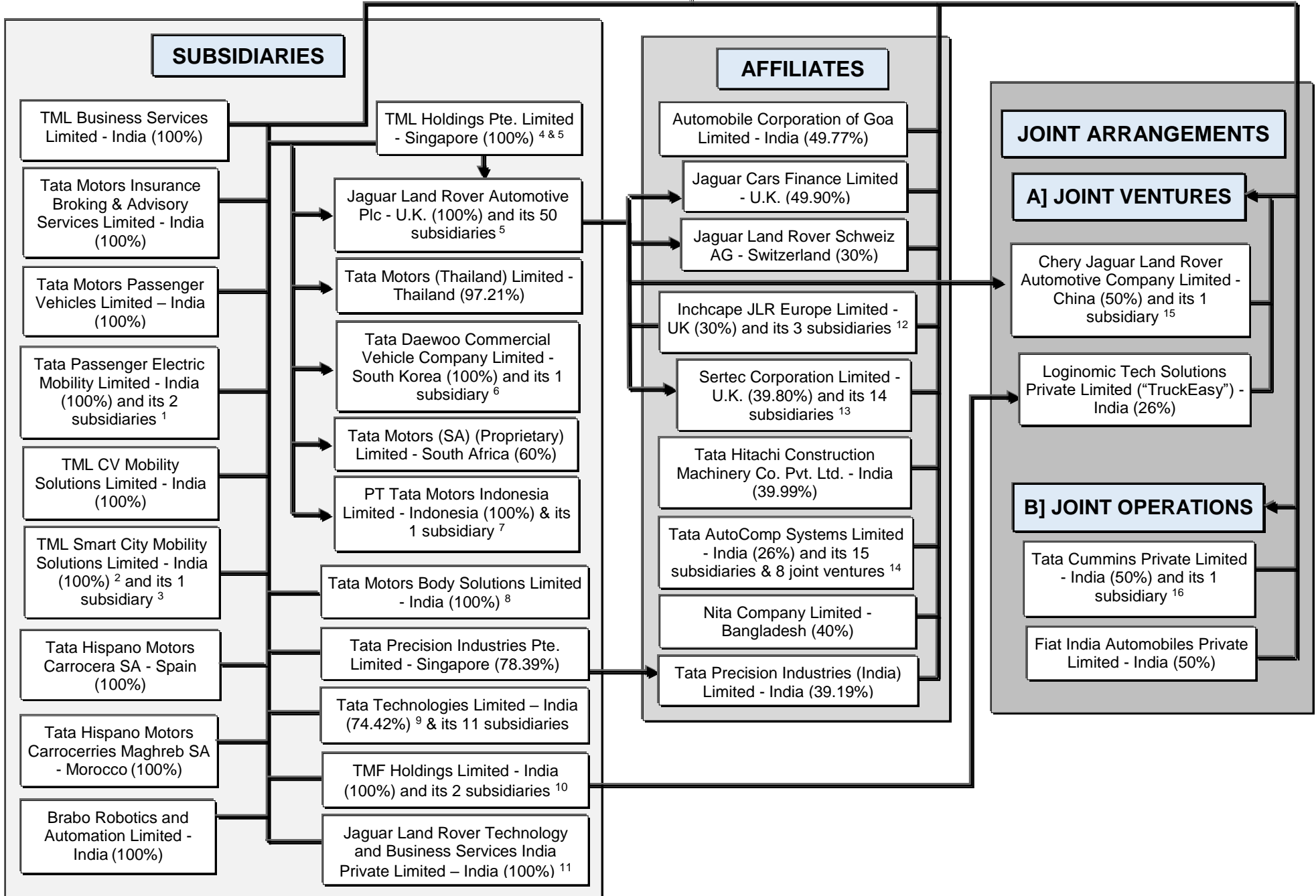


**TATA MOTORS LIMITED**  
**Subsidiaries, Affiliates & Joint Arrangements (% holding)**



- (1) Holds 100% shareholding in Tata Motors European Technical Centre PLC and Trilix S.r.l. was from a wholly owned subsidiary of Tata Motors Passenger Vehicles Limited (TMPV) upto April 27, 2022.
- (2) Incorporated with effect from May 25, 2022.
- (3) Holds 100% shareholding in TML Smart City Mobility Solutions (J&K) Private Limited, which was incorporated with effect from October 13, 2022.
- (4) These subsidiaries are based in many countries outside India.
- (5) Holding Company of Jaguar Land Rover Automotive Plc, Tata Daewoo Commercial Vehicle Co. Limited, Tata Motors (Thailand) Limited, Tata Motors (SA) (Proprietary) Limited and PT Tata Motors Indonesia.
- (6) Holding in its subsidiary, Tata Daewoo Commercial Vehicle Sales and Distribution Co. Ltd. is 100%.
- (7) Holding 99.997% in PT Tata Motors Distribusi Indonesia, a subsidiary, alongwith TML Holdings Pte. Ltd. holding 0.003%.
- (8) Tata Motors Limited's shareholding increased from 61.86% to 100% with effect from August 29, 2022 and the Company's name changed from Tata Marcopolo Motors Limited to Tata Motors Body Solutions Limited with effect from December 30, 2022.
- (9) Tata Motors Limited's shareholding increased from 74.42% to 76.69% with effect from April 20, 2022 on account of share buyback. The holdings in its 11 subsidiaries ranges between 76.69% and 76.74%.
- (10) Holds 100% shareholding in Tata Motors Finance Limited and Tata Motors Finance Solutions Limited.
- (11) Name changed from JT Special Vehicles Private Limited to Jaguar Land Rover Technology and Business Services India Private Limited with effect from April 12, 2022.
- (12) The indirect holding in its 3 wholly owned subsidiaries is at 30%.
- (13) Indirectly holds 39.80% shareholding, on account of Jaguar Land Rover Ventures Limited having acquired 39.80% shareholding with effect from June 17, 2022. The indirect holding in its 14 wholly owned subsidiaries is at 39.80%.
- (14) The indirect holding in these 15 subsidiaries ranges between 13% to 26% and the indirect holdings in these 8 joint ventures ranges between 13% to 15.60%.
- (15) The indirect holding in its wholly owned subsidiary Chery Jaguar Land Rover Auto Sales Company Limited is 50%.
- (16) The indirect holding in its wholly owned subsidiary TCPL Green Energy Solutions Private Limited is 50%.